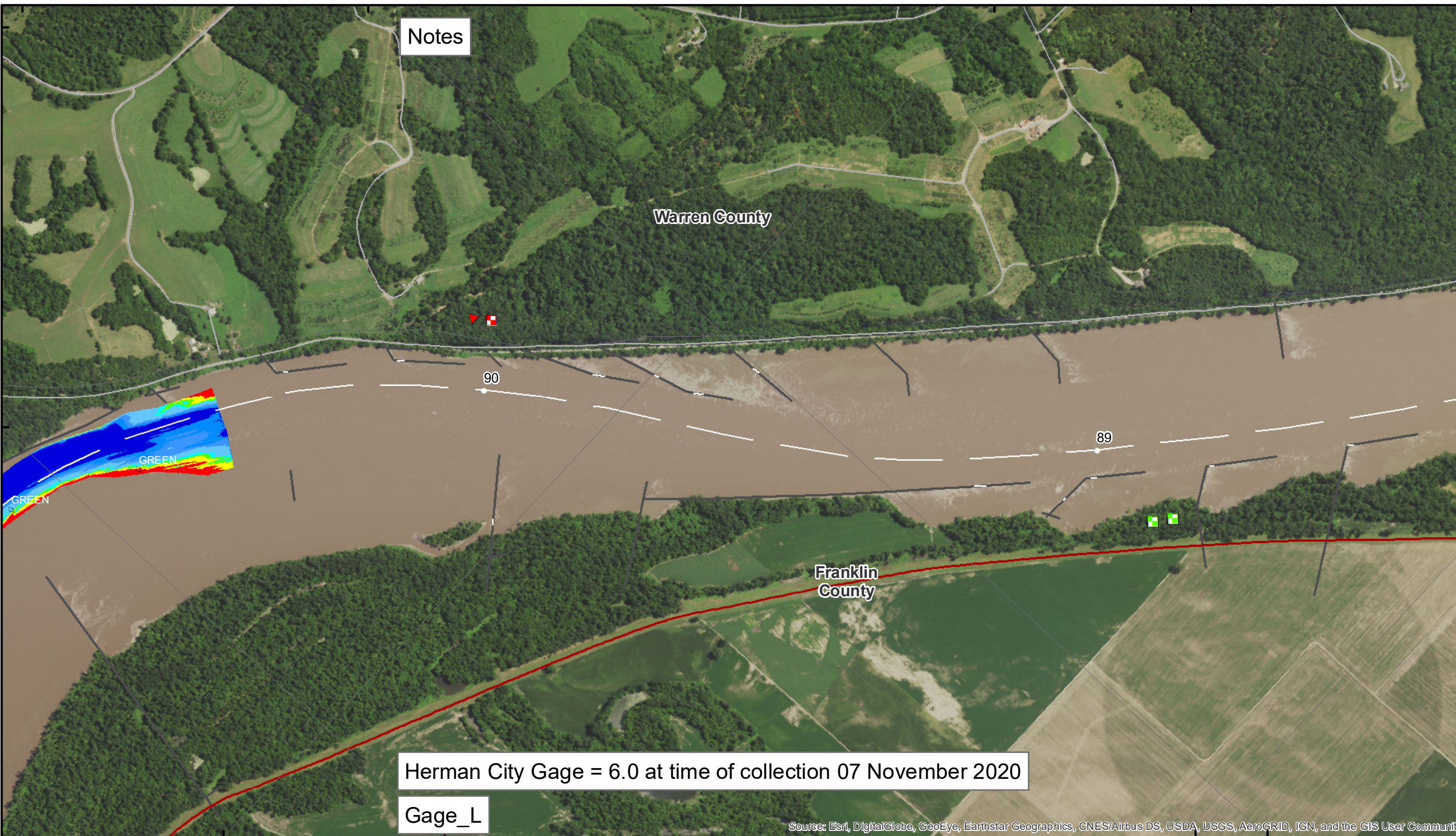


38°43'N 91°18'W 38°41'N 91°17'W



Notes

Warren County

Franklin County

Herman City Gage = 6.0 at time of collection 07 November 2020

Gage_L

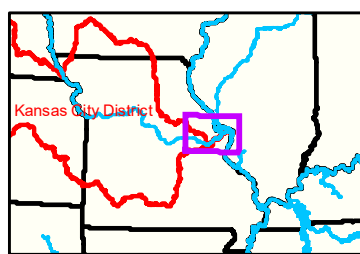
Source: Esri, DigitalGlobe, GeoEye, Earthstar Geographics, CNES/Airbus DS, USDA, USGS, AeroGRID, IGN, and the GIS User Community



DISCLAIMER: The U.S. Army Corps of Engineers provides this information as a service to the public. It is not intended to be used for navigation or other purposes. The Corps does not warrant the accuracy, completeness, or timeliness of the information. The Corps is not responsible for any errors or omissions, or for any consequences arising from the use of the information. The information is provided "as is" without any warranty, express or implied. The Corps does not accept any liability for damages, including consequential damages, arising from the use of the information. The information is not to be used for navigation or other purposes. The Corps does not warrant the accuracy, completeness, or timeliness of the information. The Corps is not responsible for any errors or omissions, or for any consequences arising from the use of the information. The information is provided "as is" without any warranty, express or implied. The Corps does not accept any liability for damages, including consequential damages, arising from the use of the information.

KANSAS CITY DISTRICT MISSOURI RIVER AREA OFFICE	
Submitted By:	MRAO
Reviewed By:	MRAO
Approved By:	MRAO

Survey Information
 MO_01_LMR
 MO_01_LMR_20201107_CS_90_4_92_0_SORT
 07 November 2020



LEGEND

	< 8		< 8 ft		Green Passing		Green		Green CAN
	8 - 9		8 - 9 ft		Red Passing		Red		Red NUN
	9 - 9.5		9 - 10 ft		Green Crossing		Junction		
	9.5 - 10		10 - 12 ft		Red Crossing				
	10 - 12		River Mile						
	12 - 14		Sailing Line						
	14 - 16		BSNP Structure						
	> 16		Levee						

Buoy

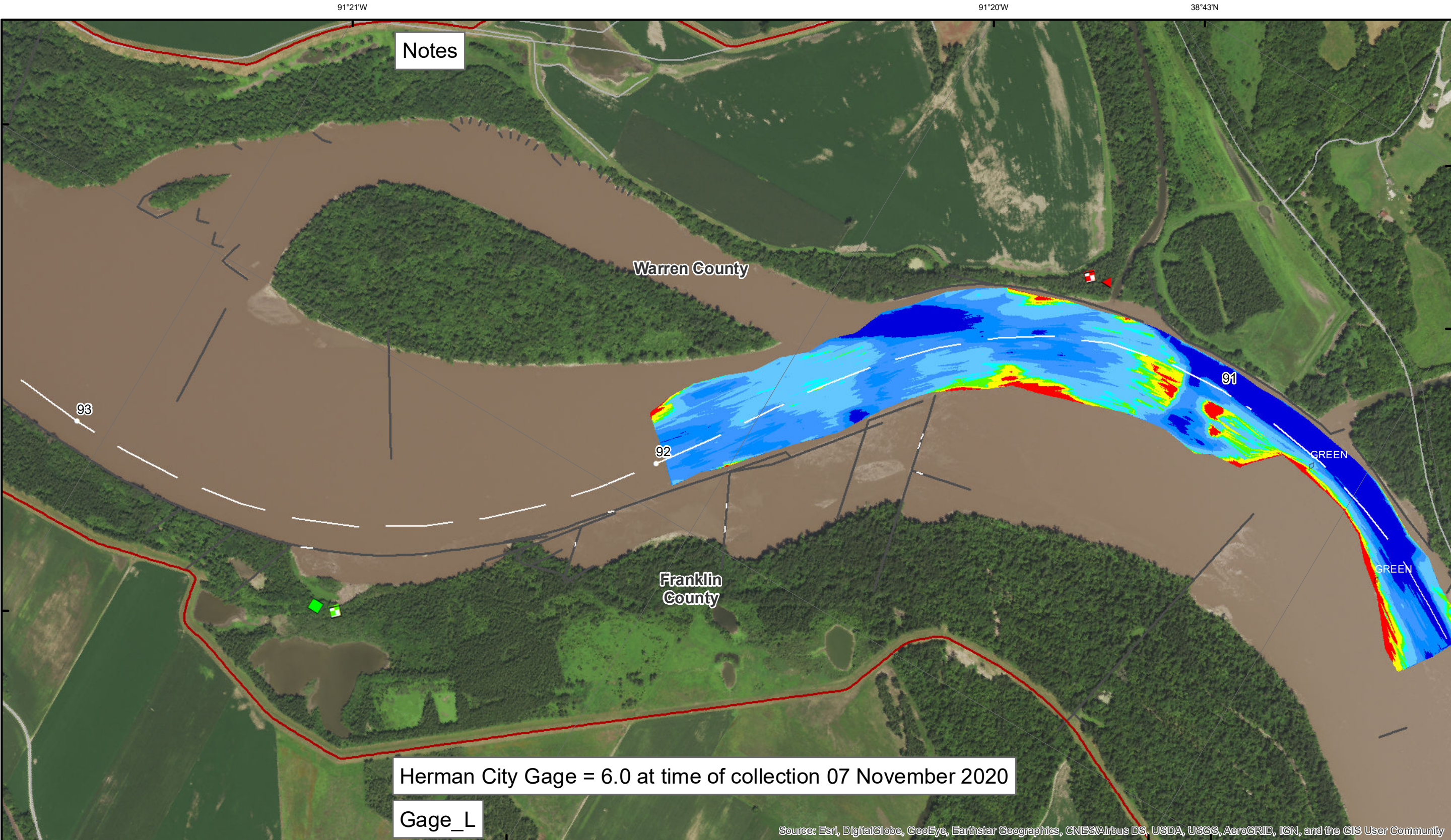
Green
 Red
 Junction

Green CAN
 Red NUN

Scale: 0 312.5 625 937.5 1,250 2,500 Feet

NOTES:
 Horizontal Coordinate System: World Geodetic System of 1984 (WGS84), projected to the Universal Transverse Mercator (UTM) Zone 15 North. Distance units in U.S. Survey Feet.
 Vertical Datum: Soundings are shown in feet and indicated depths are referenced to water surface at time of collection.
 The information depicted on this map represents the results of a survey conducted on the date indicated and can only be considered to represent the general condition existing at that time.
 The location of navigation aids are based on and provided by the U.S. Coast Guard.

Sheet Number
 41 of 46

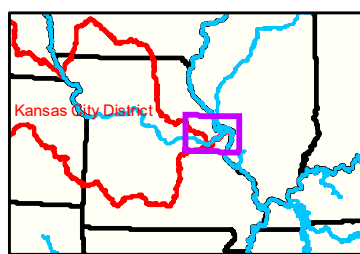


DISCLAIMER: The U.S. Army Corps of Engineers provides this information as a service to the public. It is not intended to be used for any purpose other than that for which it was prepared. The Corps makes no warranty, express or implied, as to the accuracy, reliability, or completeness of the information. The user assumes all liability for any use of the information. The U.S. Army Corps of Engineers is not responsible for any damage or loss resulting from the use of this information. The U.S. Army Corps of Engineers is not liable for any damage or loss resulting from the use of this information.

KANSAS CITY DISTRICT MISSOURI RIVER AREA OFFICE	
Submitted By:	MRAO
Reviewed By:	MRAO
Approved By:	MRAO

Survey Information
 MO_01_LMR
 MO_01_LMR_20201107_CS_90_4_92_0_SORT
 07 November 2020

Sheet Number
 42 of 46



91°20'W 91°19'W 38°41'N

		LEGEND			Buoy	
--	--	---------------	--	--	-------------	--

0 312.5 625 937.5 1,250 2,500
 Feet

NOTES:
 Horizontal Coordinate System:
 World Geodetic System of 1984 (WGS84), projected to the Universal Transverse Mercator (UTM) Zone 15 North. Distance units in U.S. Survey Feet.
 Vertical Datum:
 Soundings are shown in feet and indicated depths are referenced to water surface at time of collection.
 The information depicted on this map represents the results of a survey conducted on the date indicated and can only be considered to represent the general condition existing at that time.
 The location of navigation aids are based on and provided by the U.S. Coast Guard.